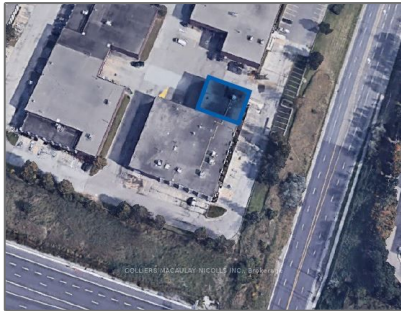


# Industrial

- 5422 Timberlea Blvd, Mississauga, Ontario L4W 2T7



## Basic Details

Property Type:	<b>Industrial</b>
Listing Type:	<b>For Lease</b>
Listing ID:	<b>W9008612</b>
Price:	<b>\$19</b>
Year Built:	<b>0</b>
Lot Area:	<b>0 Sqft</b>

## Address

Country:	<b>CA</b>
Province:	<b>Ontario</b>
City:	<b>Mississauga</b>
Postal Code:	<b>L4W 2T7</b>
Street:	<b>Timberlea</b>
Street Number:	<b>5422</b>
Street Suffix:	<b>Blvd</b>
Floor Number:	<b>0</b>
Longitude:	<b>W80° 21' 31.7"</b>
Latitude:	<b>N43° 37' 41.6"</b>

## Features

✓ Heating System:	<b>Gas Forced Air Open</b>
✓ Elevator:	<b>None</b>

## Agent Info



Parveen Arora

[www.teamarora.com](http://www.teamarora.com)

4169108923

parveen@teamarora.com

---