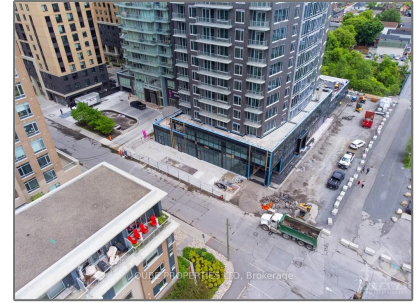


# Commercial/retail

- 115 CHAMPAGNE Ave, Dows Lake - Civic  
Hospital and Area, Ontario K1S 3L8



## Basic Details

|                |                          |
|----------------|--------------------------|
| Property Type: | <b>Commercial/retail</b> |
| Listing Type:  | <b>For Lease</b>         |
| Listing ID:    | <b>X9516614</b>          |
| Price:         | <b>\$35</b>              |
| Year Built:    | <b>0</b>                 |
| Lot Area:      | <b>0 Sqft</b>            |

## Address

|                |  |
|----------------|--|
| Country:       | <b>CA</b>                                      |
| Province:      | <b>Ontario</b>                                 |
| City:          | <b>Dows Lake - Civic<br/>Hospital and Area</b> |
| Postal Code:   | <b>K1S 3L8</b>                                 |
| Street:        | <b>CHAMPAGNE</b>                               |
| Street Number: | <b>115</b>                                     |
| Street Suffix: | <b>Ave</b>                                     |
| Floor Number:  | <b>0</b>                                       |
| Longitude:     | <b>E0° 0' 0"</b>                               |
| Latitude:      | <b>N0° 0' 0"</b>                               |

## Agent Info



Parveen Arora

[www.teamarora.com](http://www.teamarora.com)

4169108923

[parveen@teamarora.com](mailto:parveen@teamarora.com)

